


Windows 8.1 and Windows 10

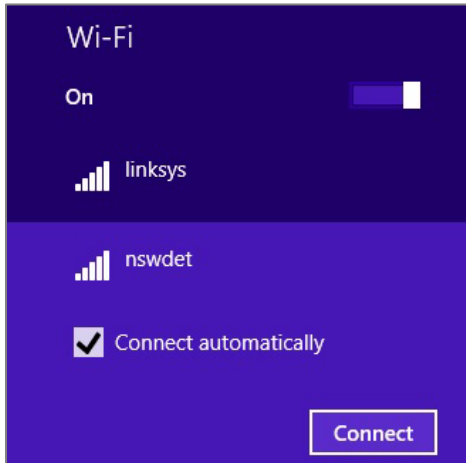
a) Connect to wireless network

- Click on the wireless icon in taskbar.

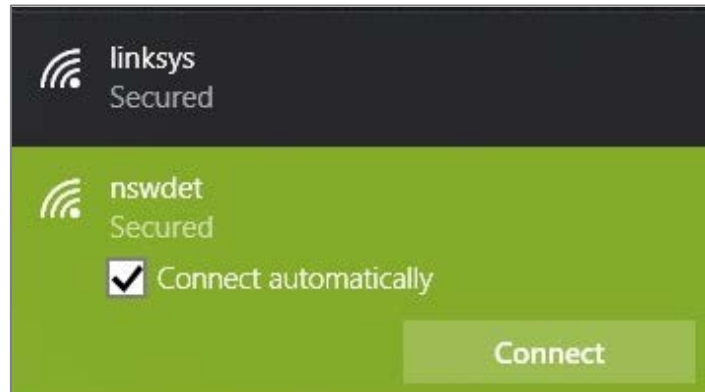
Windows 8.1 icon: 

Windows 10 icon: 

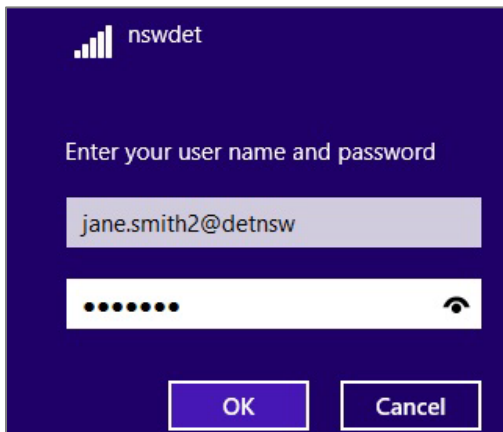
- Select “nswdet” and click on “Connect”.



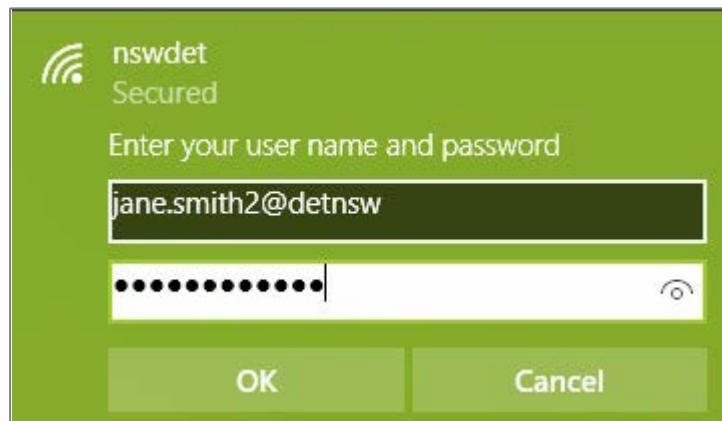
or



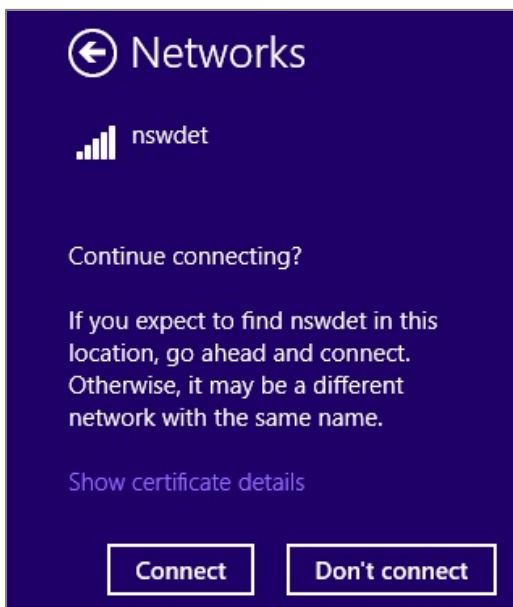
- Enter credentials in format below – your DEC username, including any numbers, followed by **@detnsw** and your DEC password. If you are unsure of your username or password, go to TSO office before you try to connect. Click on “OK”.




or

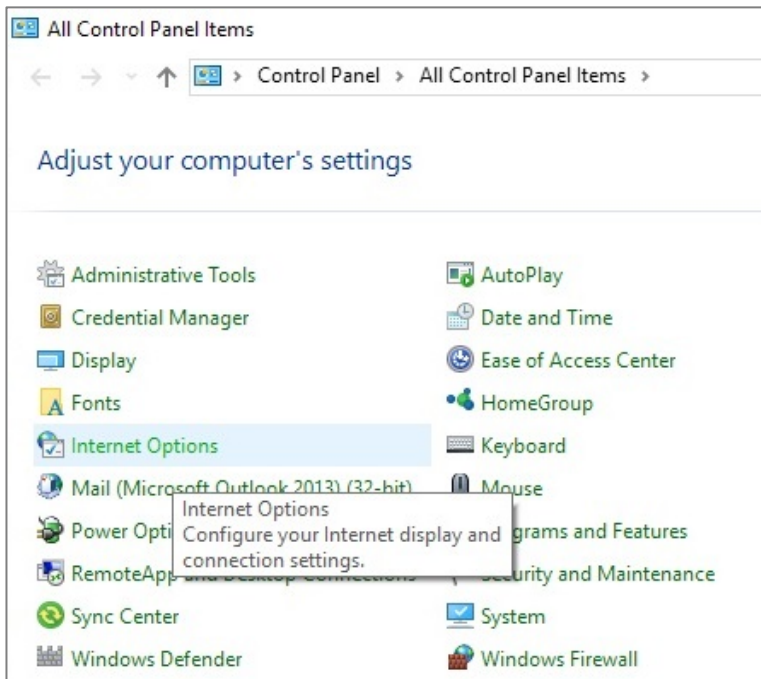


- Click on “Connect”. If Wi-fi doesn’t show as “Connected” you need to restart and go through the process again.

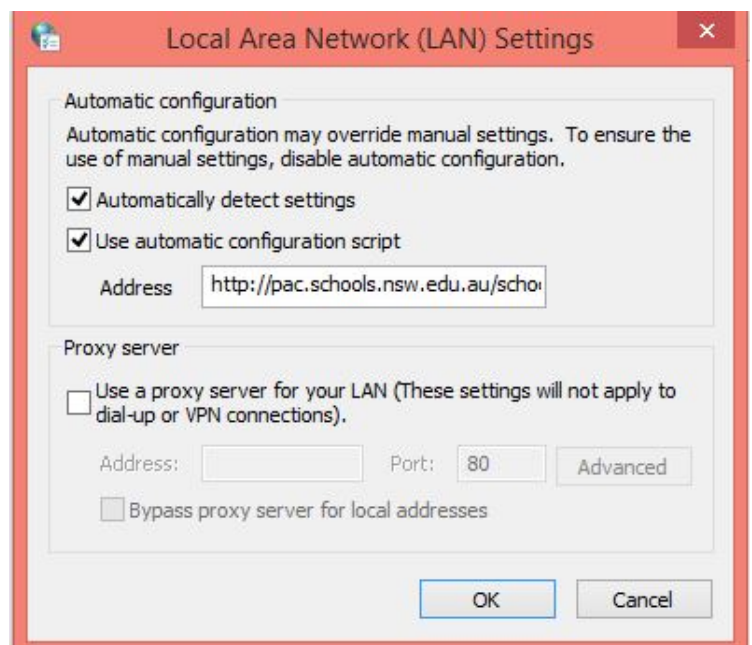
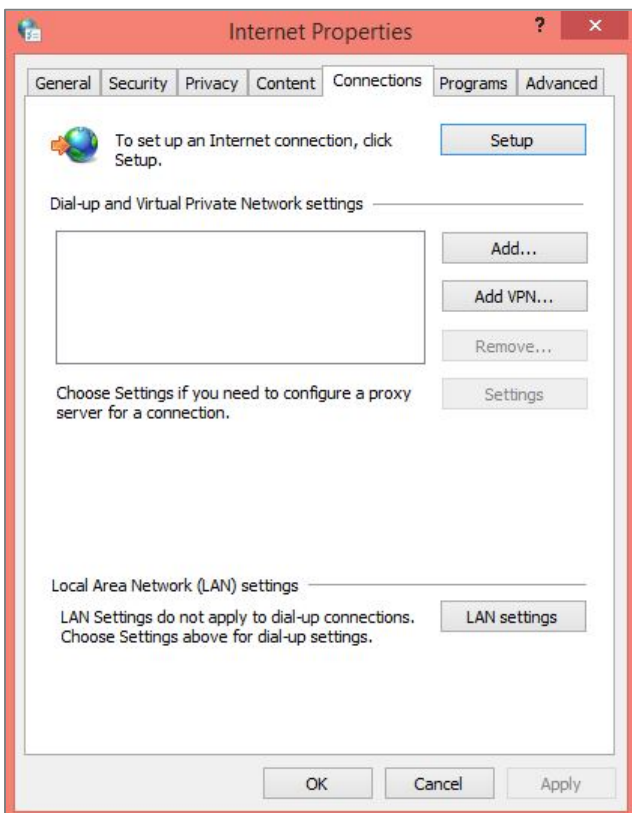


b) Enter proxy settings

- Search for “Internet Options” or right click on Windows button  on bottom left of your desktop and go to Control Panel > Network and Internet > Internet Options.



- Select “Connections” tab and Click on “LAN settings”. In LAN settings check both “Automatically detect settings” and “Use automatic configurations script” and type into the “Address” field: <http://pac.schools.nsw.edu.au/schools/wireless-failover.pac>

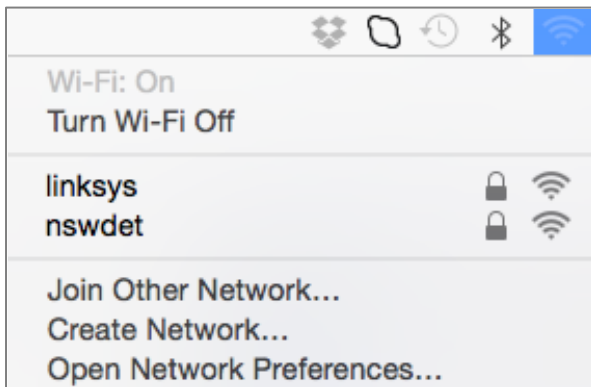


- Click on “OK” on LAN Settings box and “OK” on Internet Properties box to close “Internet options”.
- Open www.google.com.au in a web browser and enter your DEC username and password if credential box appears. Make sure you can browse the internet successfully as this means your proxy settings are correct.

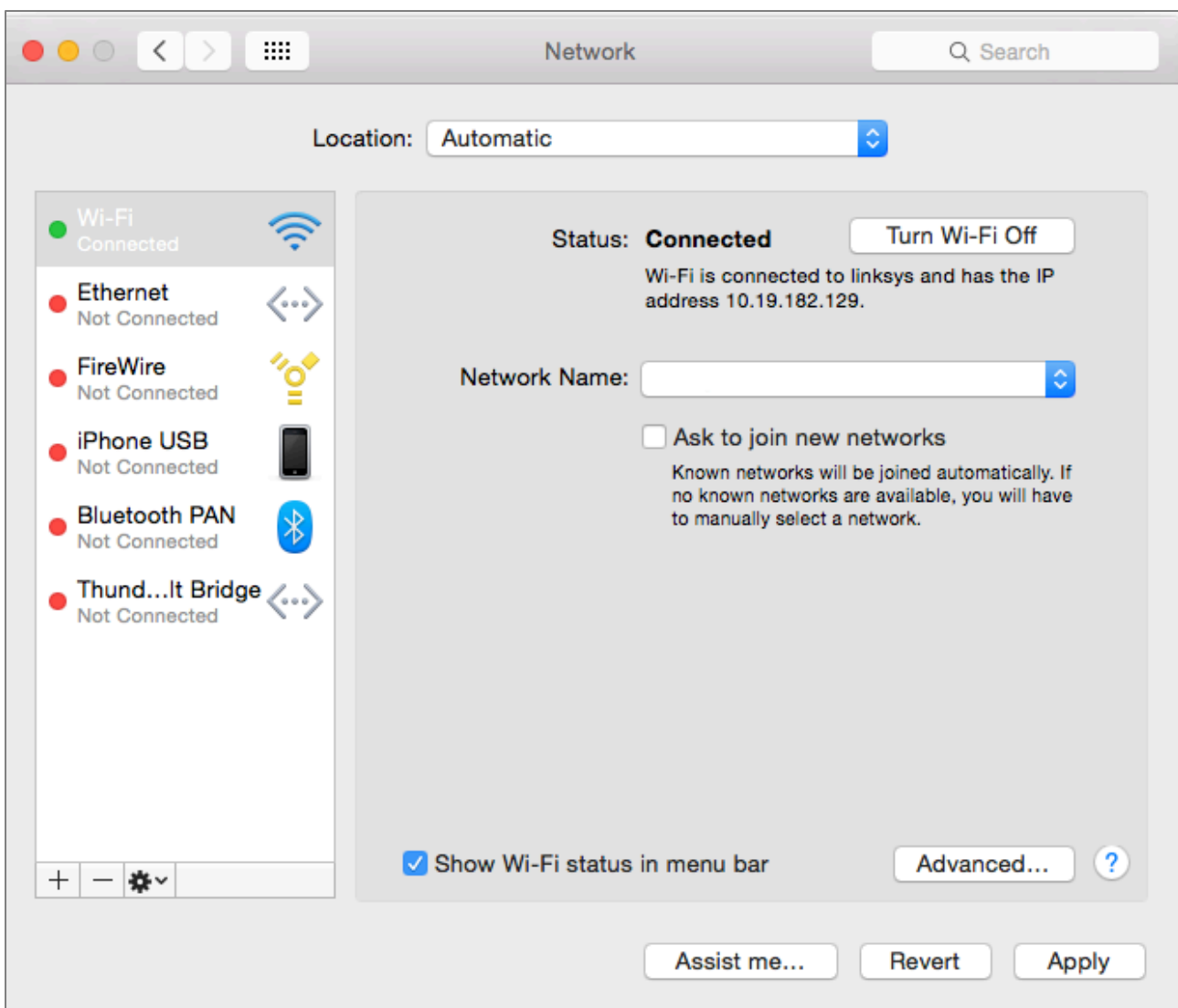
Mac OS X

a) Connect to wireless network

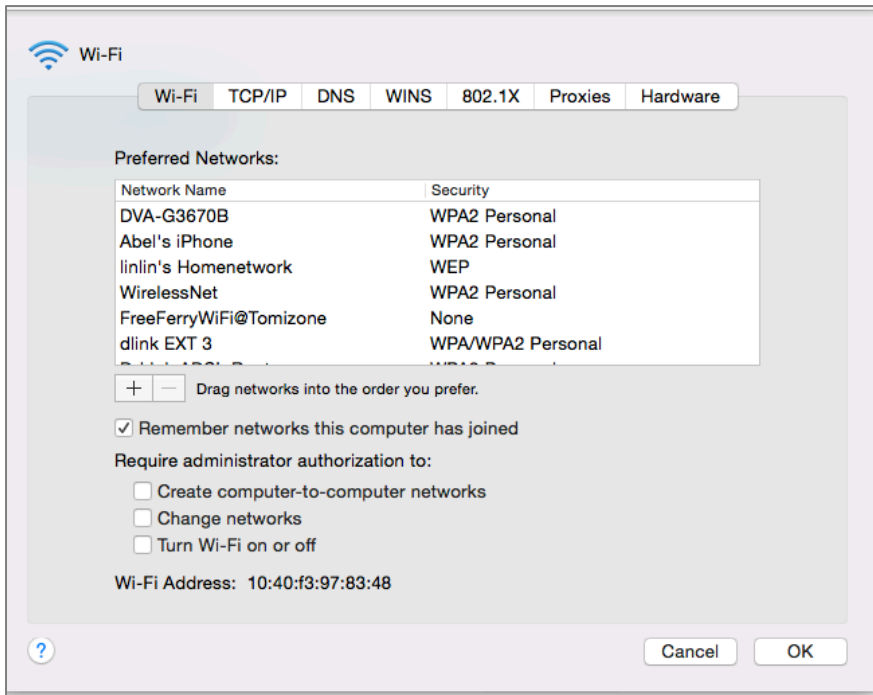
- Click on wireless icon and select “Open Network Preferences”.



- Click on “Advanced”.



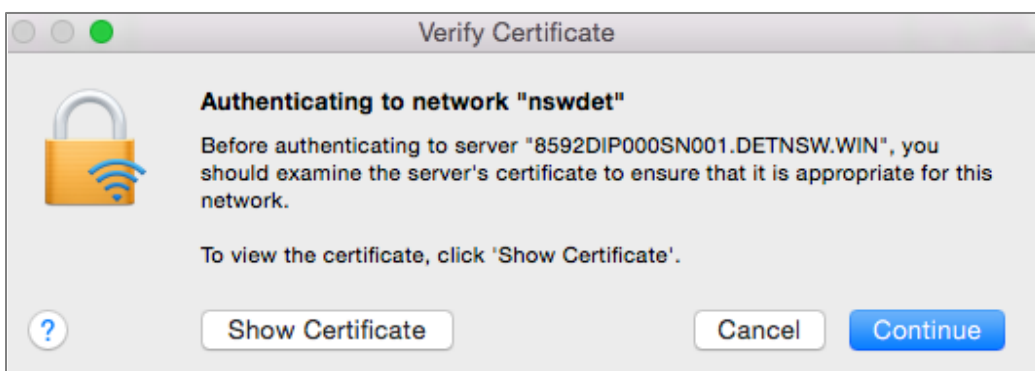
- Click on the “+” symbol to add a new network profile.



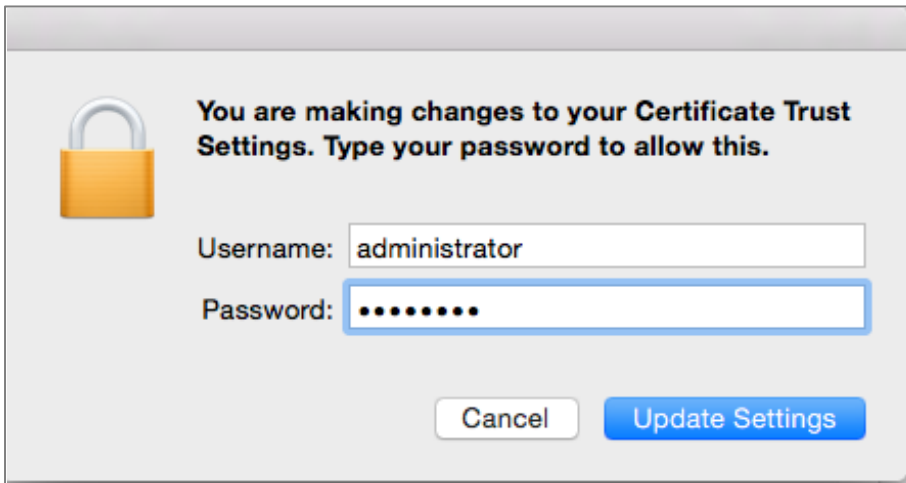
- Enter network details and credentials in format below – your DEC username, including any numbers, followed by **@detnsw** and your DEC password. If you are unsure of your username or password, go to TSO office before you try to connect. Click on “OK”.



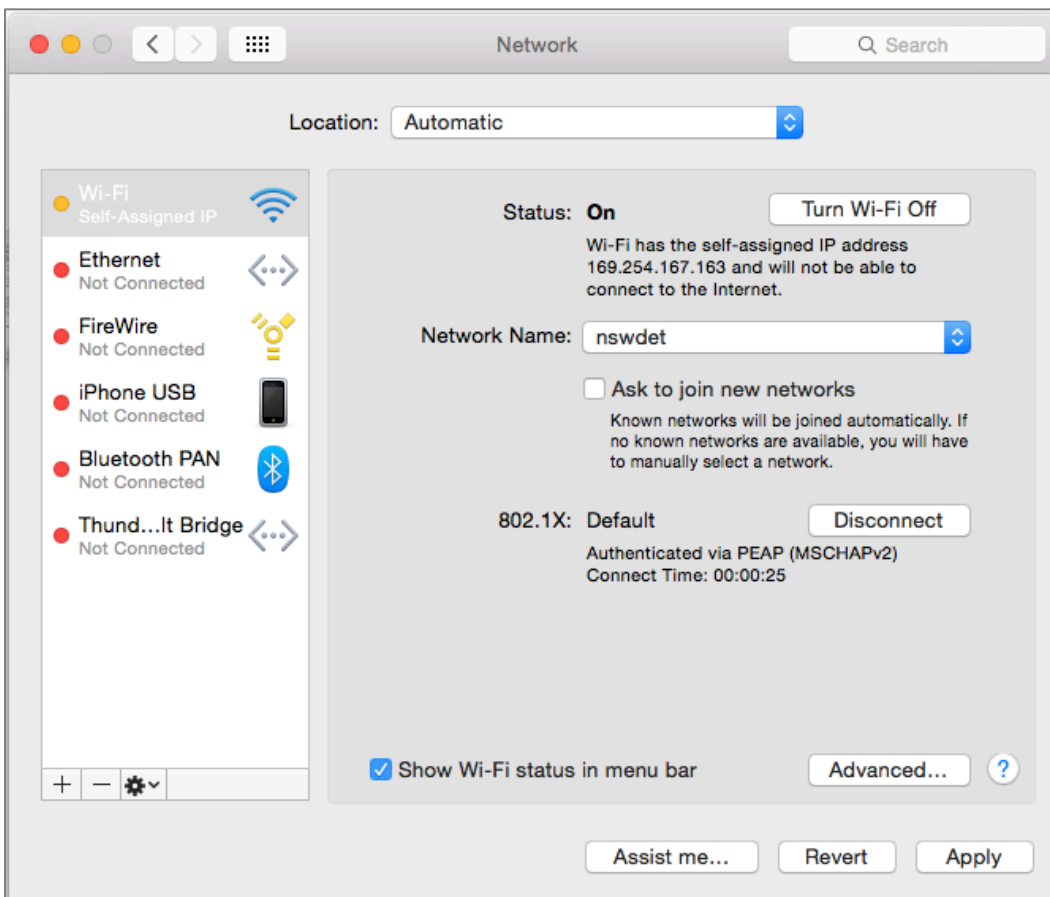
- When the “Verify Certificate” box appears click on “Continue”.



- If the message below appears, enter your administrator username and password to allow the changes to your “Certificate Trust Settings”.

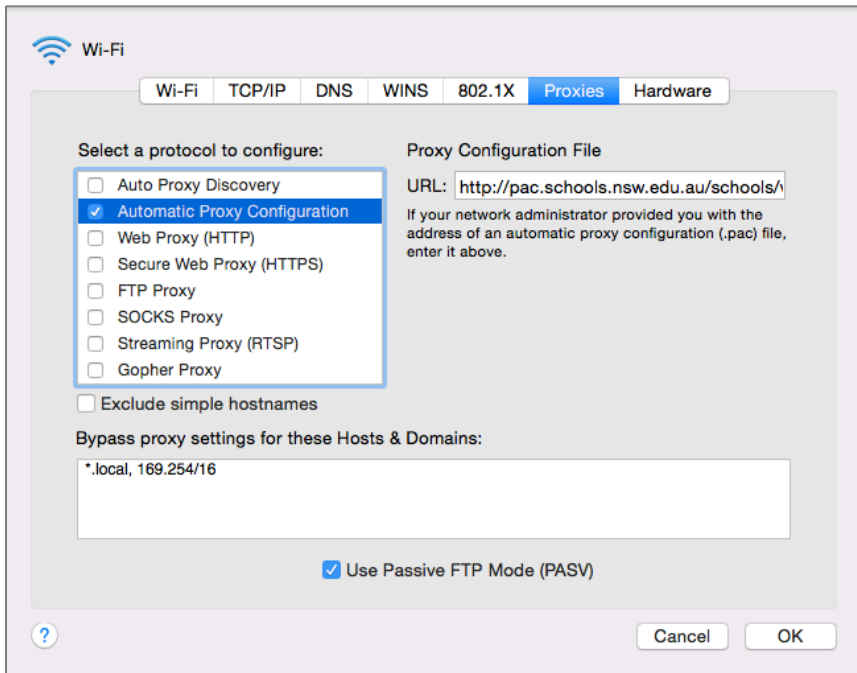


- Once the network is connected the status in “Network Preferences” will appear as below. Note that authentication may take up to a minute.



b) Enter proxy settings

- Click on “Advanced” and select “Proxies” tab and check “Automatic Proxy Configuration”. Type into the URL field: **http://pac.schools.nsw.edu.au/schools/wireless-failover.pac** and click on “OK”.



- Click on “Apply” in main “Network Preferences” window and close the application.
- Open **www.google.com.au** in a web browser and enter your DEC username and password if credential box appears. Make sure you can browse the internet successfully as this means your proxy settings are correct.

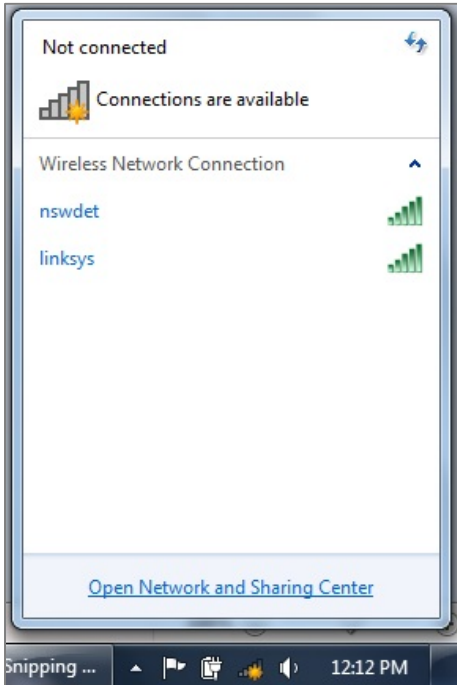
Windows 7

a) Configure wireless network settings

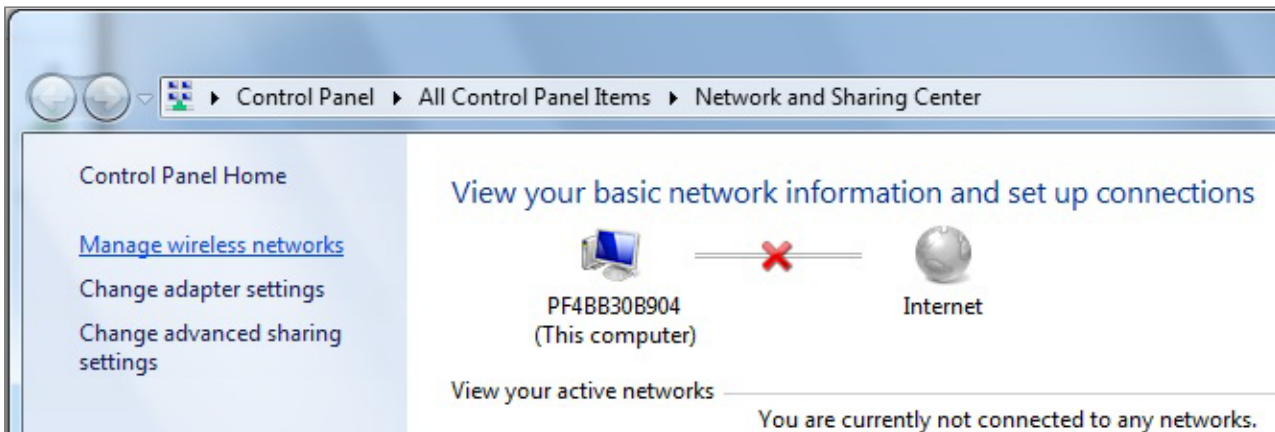
- Click on the wireless icon in taskbar.



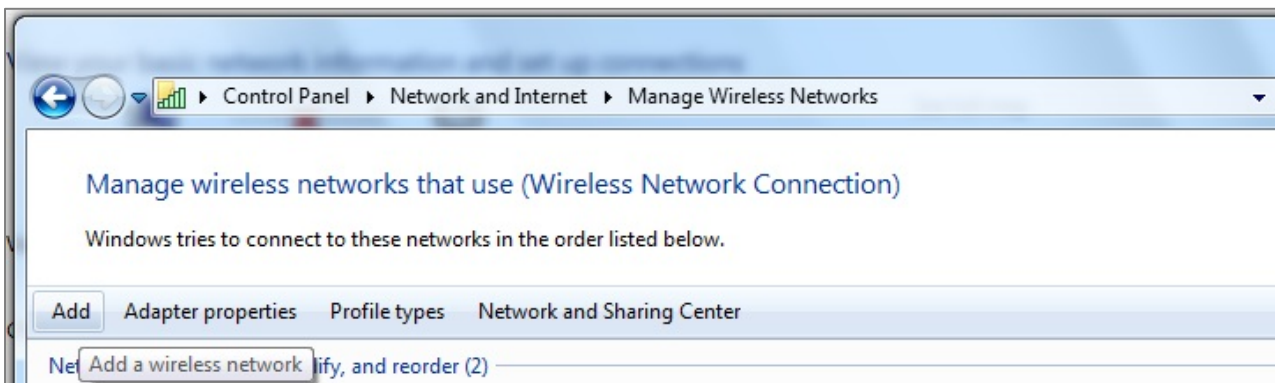
- Select “Open Network and Sharing Center”



- Select “Manage Wireless Networks”.



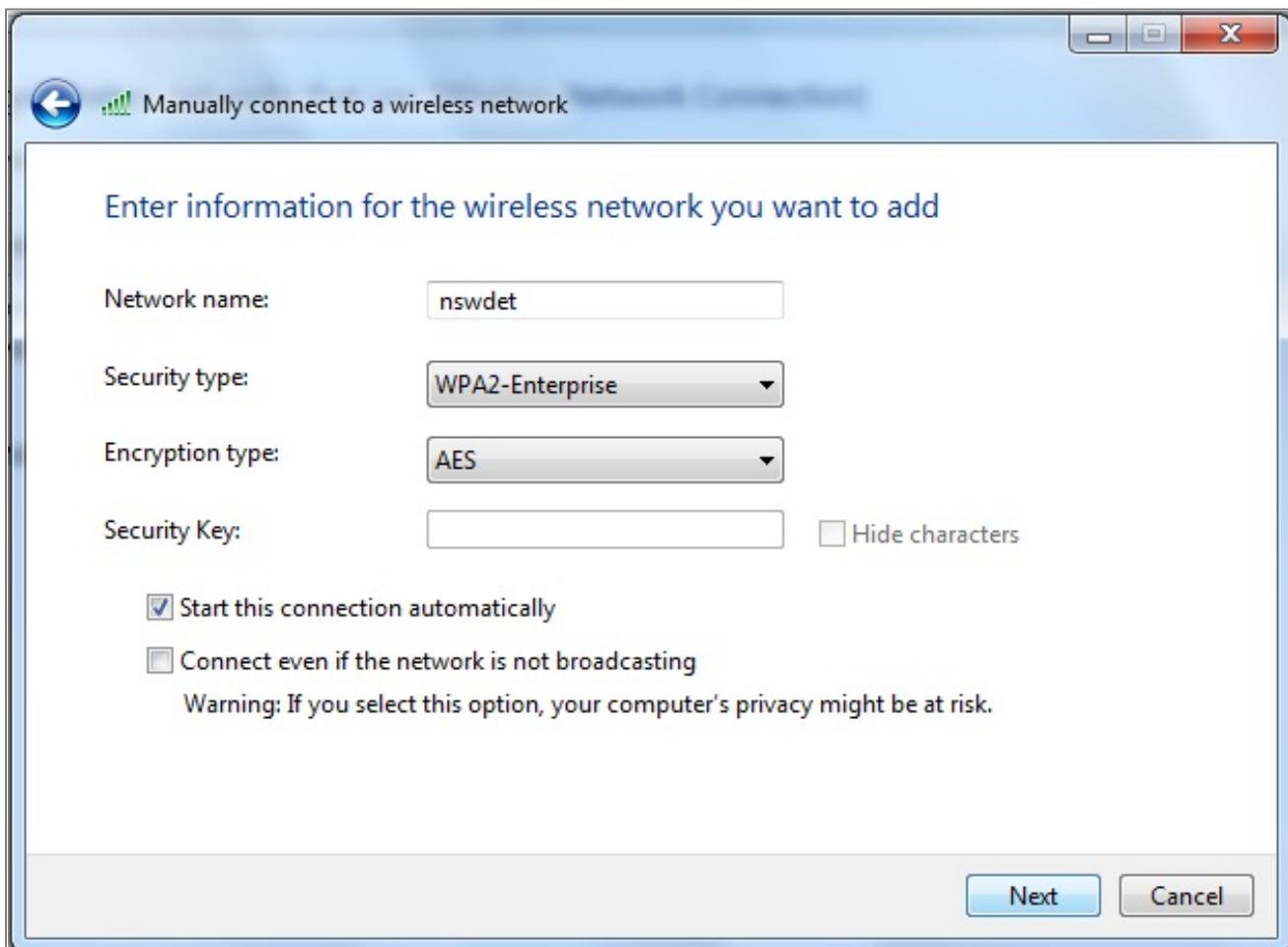
- Click on “Add”.



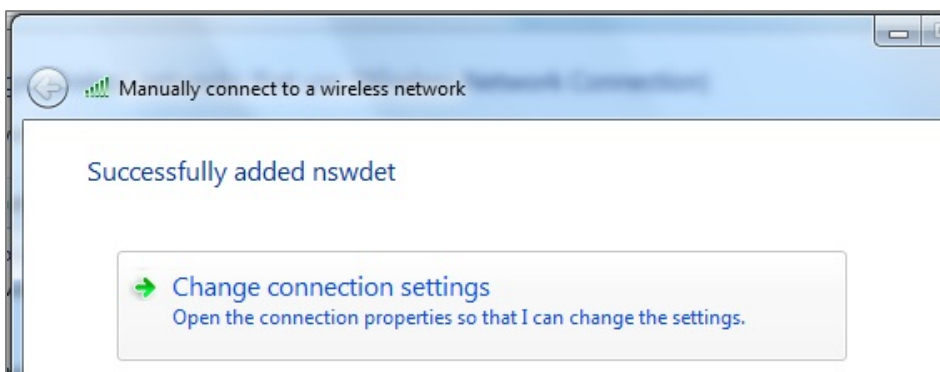
- Select “Manually create a network profile”.



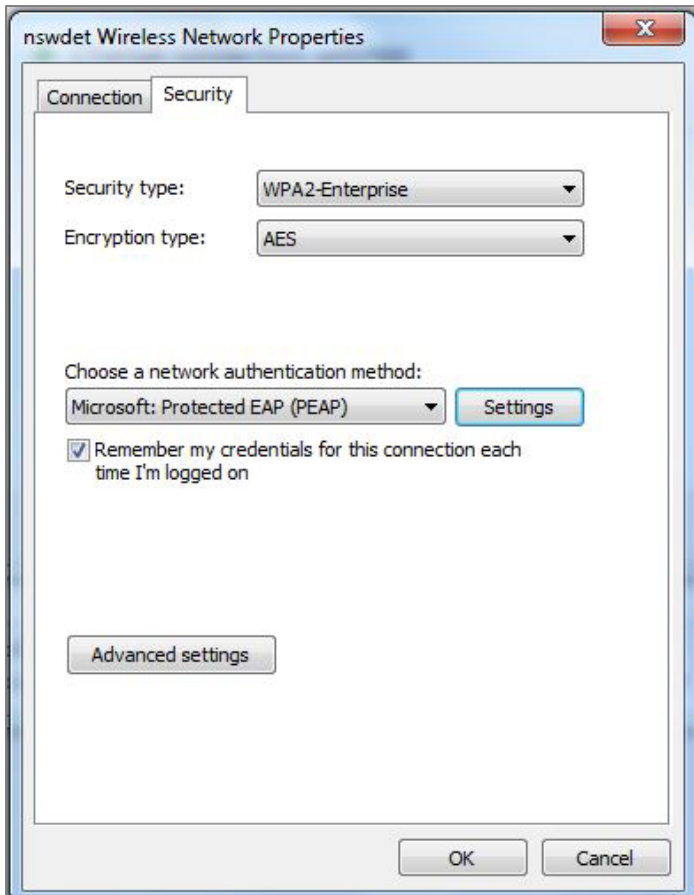
- Enter network details as below and click on “Next”.



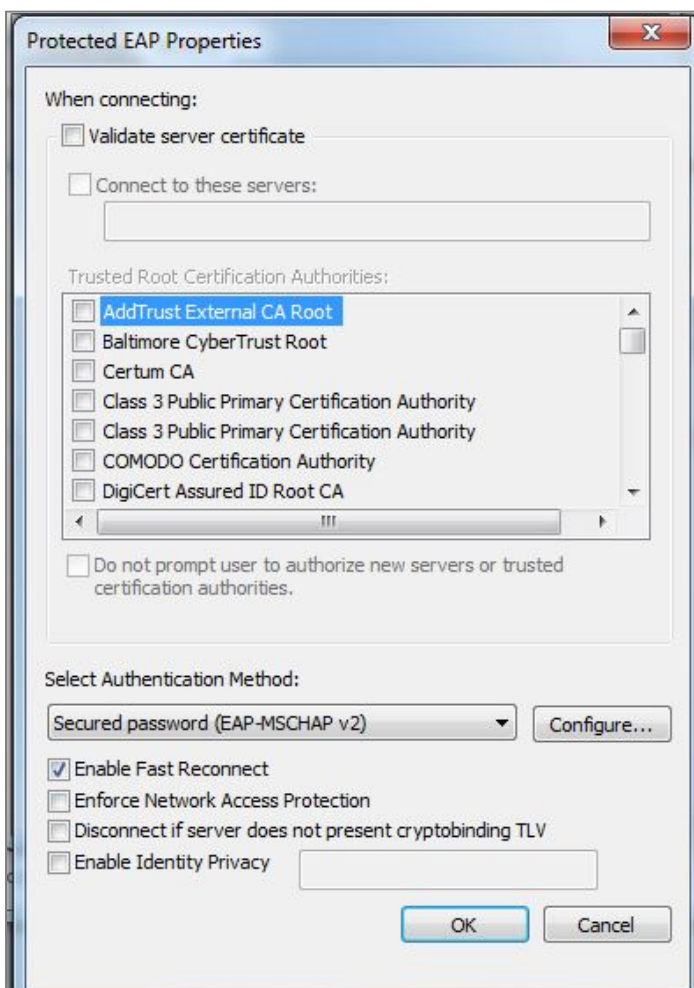
- Select “Change connection settings”.



- Select “Security” tab and click on “Settings”.



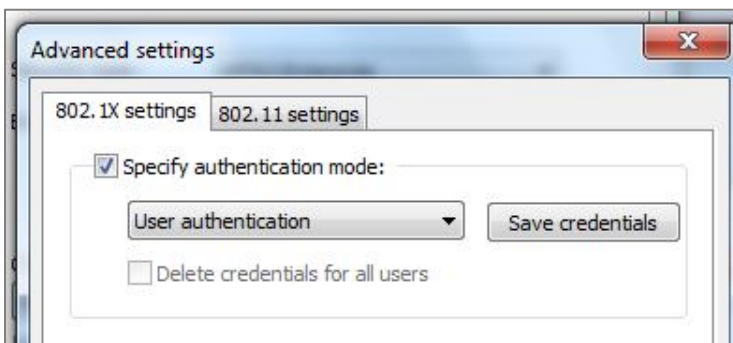
- Uncheck “Validate server certificate” and click on “Configure”.



- Uncheck “Automatically use my Windows logon name and password...” and click on “OK” and “OK” again to close “Protected EAP Properties”.

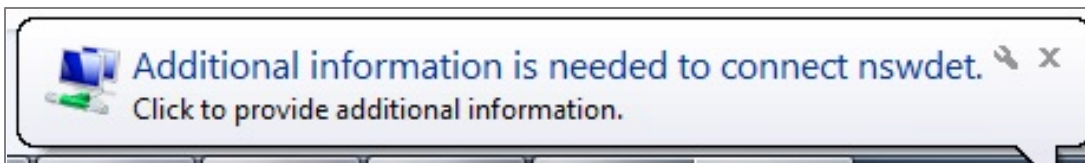


- In “Security” tab click on “Advanced Settings” and check “Specify authentication mode” and use drop down box select “User authentication”. Click on “OK” and “OK” to close all the dialog boxes.

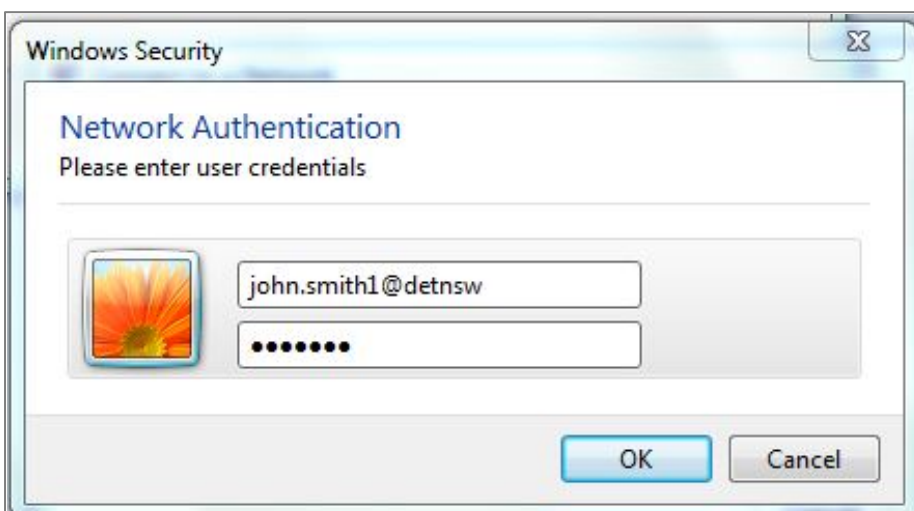


b) Connect to wireless network

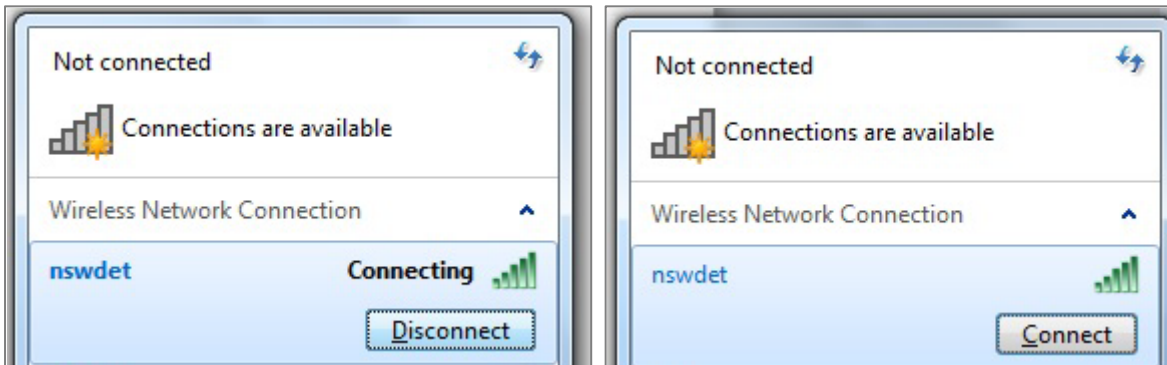
- Click on the message below so that credential box appears.



- Enter credentials in format below – your DEC username, including any numbers, followed by **@detnsw** and your DEC password. If you are unsure of your username or password, go to TSO office before you try to connect. Click on “OK”.

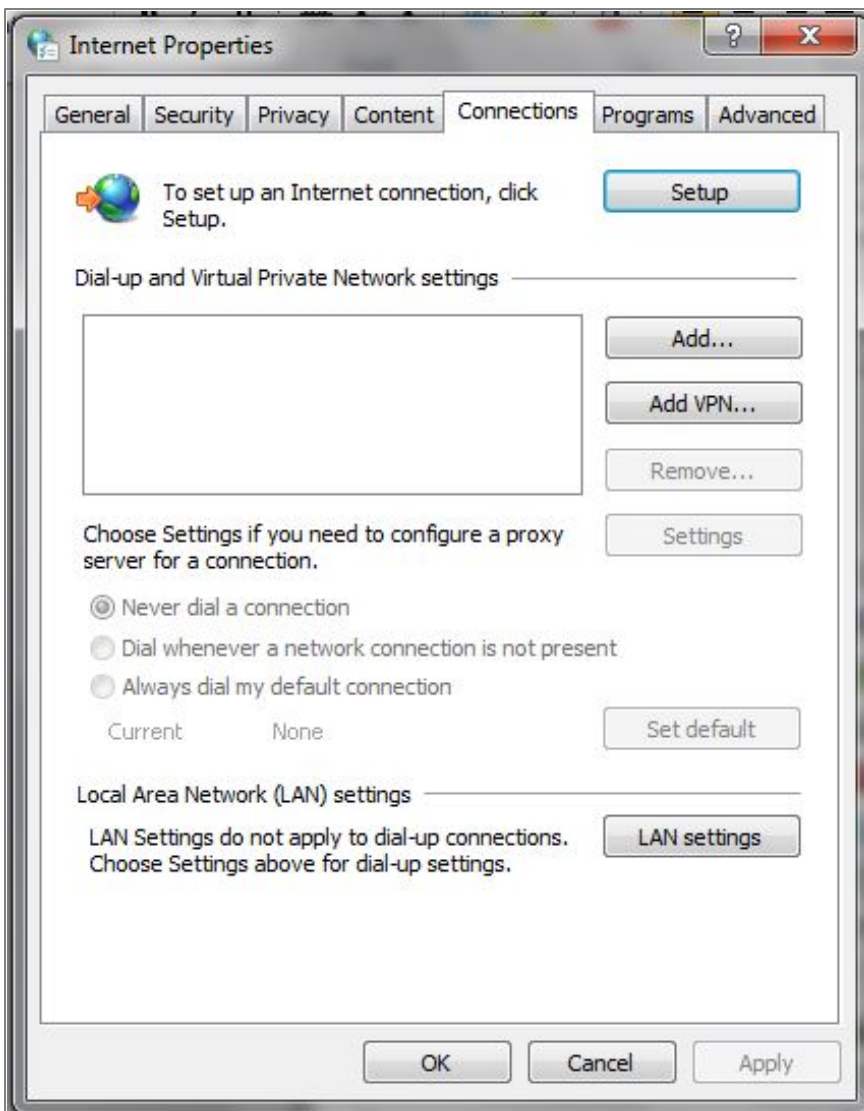


- If the wireless does not connect, click on wireless icon in taskbar to display available networks, select **nswdet** network and click on “Disconnect” followed by “Connect”. This will cause credential box to reappear. Sometimes you may need to type in your credentials multiple times before you will be connected to the wireless network.

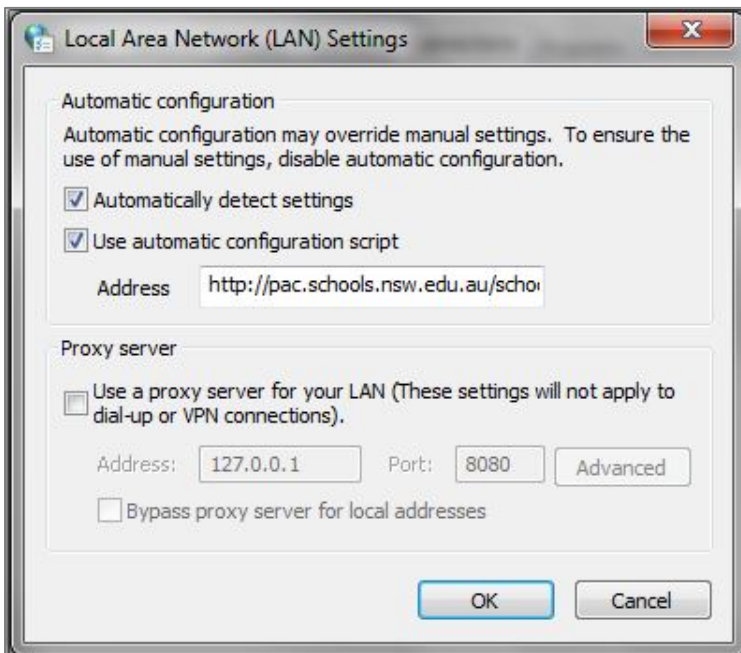


c) Enter proxy settings

- Search for “Internet Options” or go to Control Panel > Network and Internet > Internet Options. Select “Connections” tab and Click on “LAN settings”.



- Check both “Automatically detect settings” and “Use automatic configurations script” and type into the “Address” field: **http://pac.schools.nsw.edu.au/schools/wireless-failover.pac**

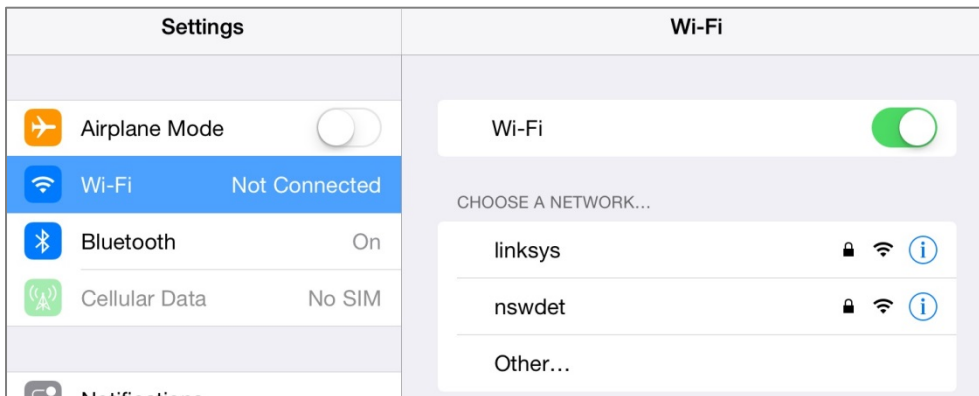


- Click on “OK” and “OK” again to close “Internet options”.
- Open **www.google.com.au** in a web browser and enter your DEC username and password when credential box appears. Make sure you can browse the internet successfully as this means your proxy settings are correct.

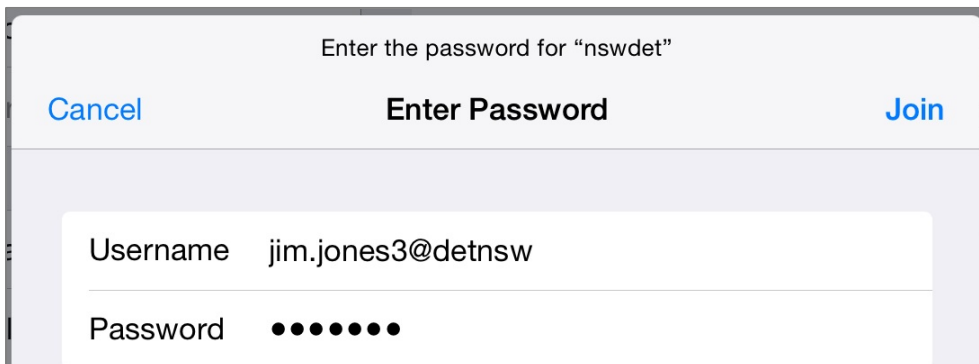
Mac iOS

a) Connect to wireless network

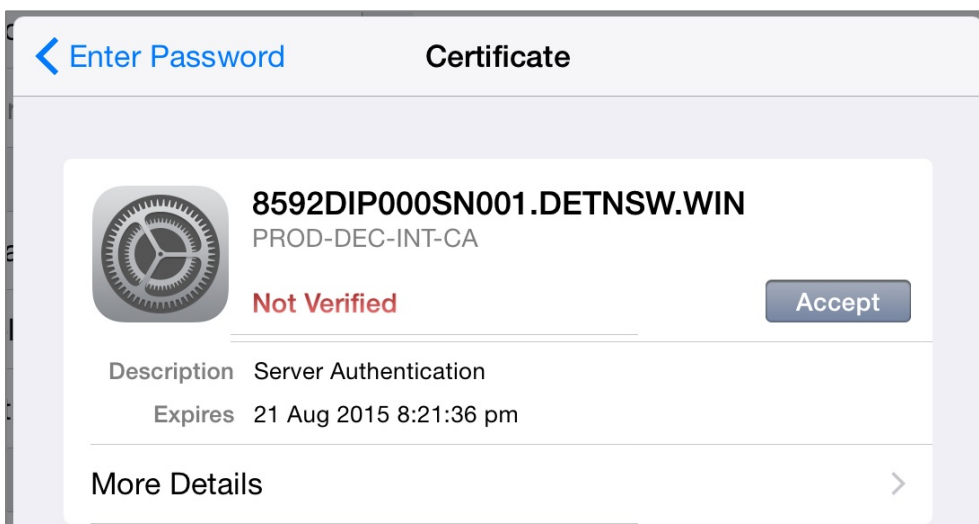
- Tap the “Settings” icon on Home screen and select “Wi-fi”. Select **nswdet** network.




- Enter credentials in format below – your DEC username, including any numbers, followed by **@detnsw** and your DEC password. If you are unsure of your username or password, go to TSO office before you try to connect. Tap on “Join”.

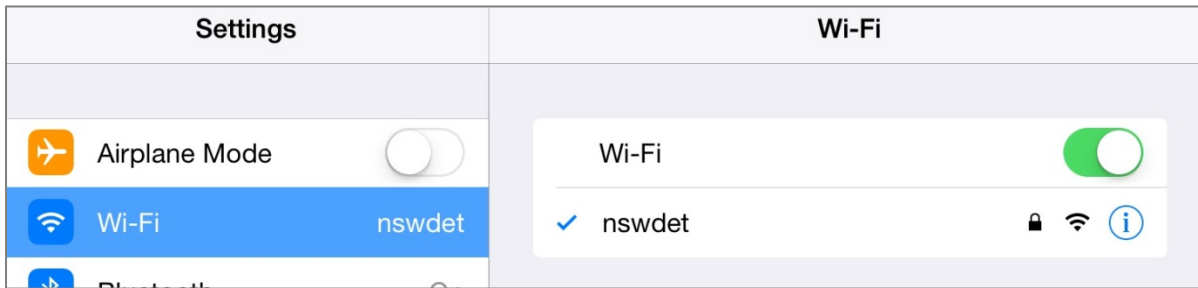


- When the “Certificate” box appears tap on “Accept”.

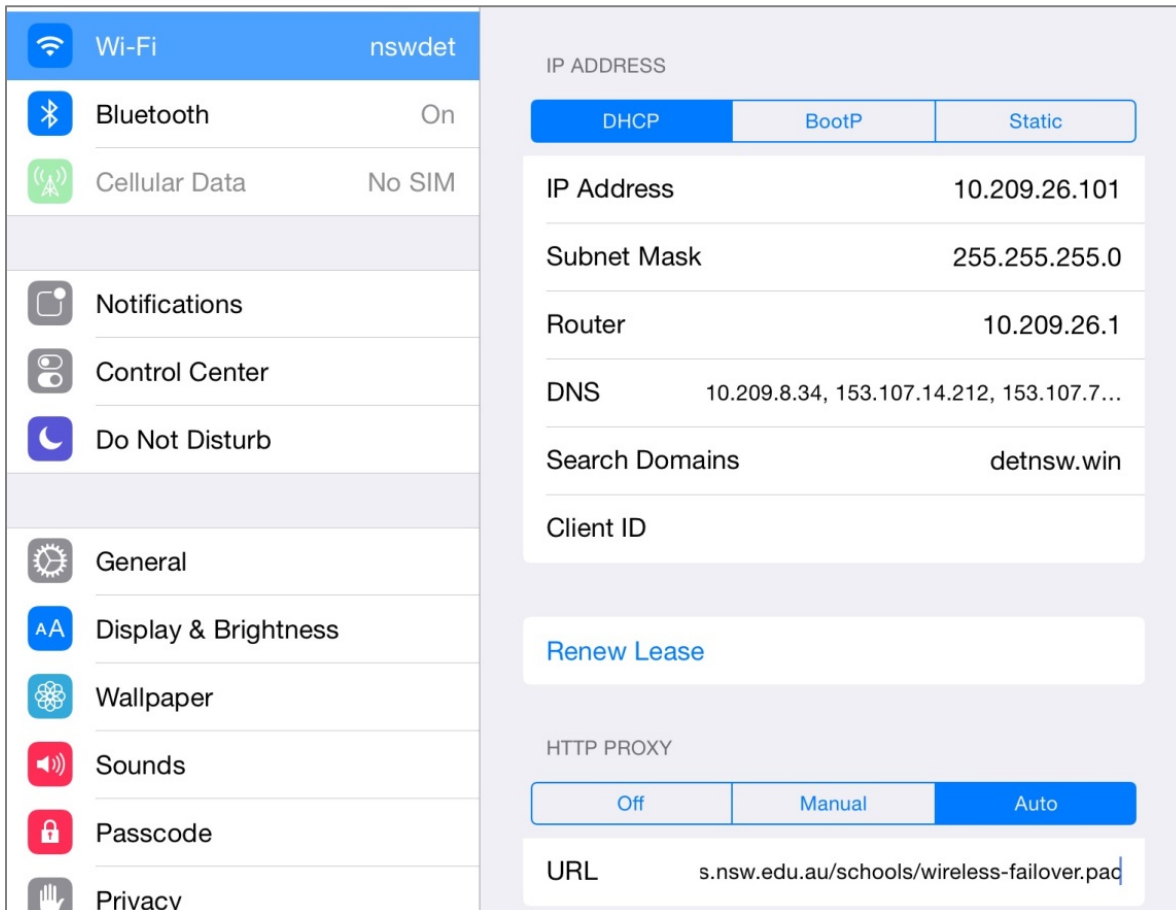


b) Enter proxy settings

- Tap on  icon next to **nswdet**.



- Select “Auto” in “HTTP PROXY” settings and type into the URL field:
<http://pac.schools.nsw.edu.au/schools/wireless-failover.pac> and click on “OK”.



- Close “Settings”.
- Open **www.google.com.au** in a web browser and enter your DEC username and password if credential box appears. Make sure you can browse the internet successfully as this means your proxy settings are correct.